

The background of the slide features a world map in a dark, muted color. Overlaid on the map is a vibrant sunset sky with orange, yellow, and blue hues. In the foreground, the silhouettes of seven business professionals (men and women in suits) are shown from behind, looking out towards the horizon. A thin green horizontal line is positioned across the middle of the silhouettes. The overall composition conveys a sense of global business and forward-looking technology.

ZKTeco

# New IP and HD analog products

生而为赢

**New Private casing and features**

**Analog HD solution**

**IP solution**

**PC client software/ Mobile app**

**Biosecurity 3.0 compatibility**



***Stylish and exquisite body design***  
(ZKTECO Appearance Design Patent)



## Revolutionary unibody engineering

Promise the high precision dust and water proof (IP67), as well as the save the metal part numbers for better cost control.

***Innovative Mechanism Design***



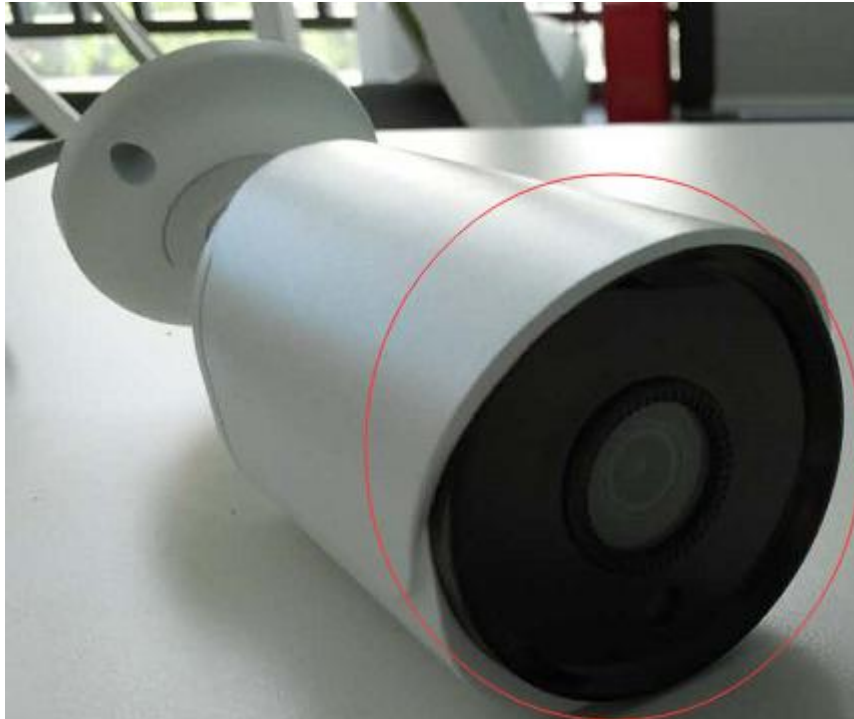
## Faster and easier installation

- One key dead lock

3- dimensional bracket could be adjusted easily to watch the camera to any angle, just need to use the default equipped allen key to loose and fix the hex screw on the base.



***Innovative Mechanism Design***



## Industrial high transparency PC material front cover

Imported PC material  
Light penetration rate 90% higher  
Anti- light reflection

***Innovative Mechanism Design***





## Vehicle industry level LED material

Imported material

High power efficiency around 90% to beat the common CCTV camera LED(70-80%), it means

- a. 1pc of LED could be equal with the common LED 30pcs.
- b. the watts loss(heat dissipation) is much less, to extend the working life and reduce the hot noise.

SMT workmanship, smart IR to avoid the spot light issue

ceramic base and elargol package for better cooling

***Innovative Mechanism Design***



## Top class quality optical lens module

7 glass layer with film coated to provide better light penetration

Heat resistant IR cut filter could stand for 100,000 times switch

Integrated lens module to improve the focus accuracy and stability.

***Innovative Mechanism Design***



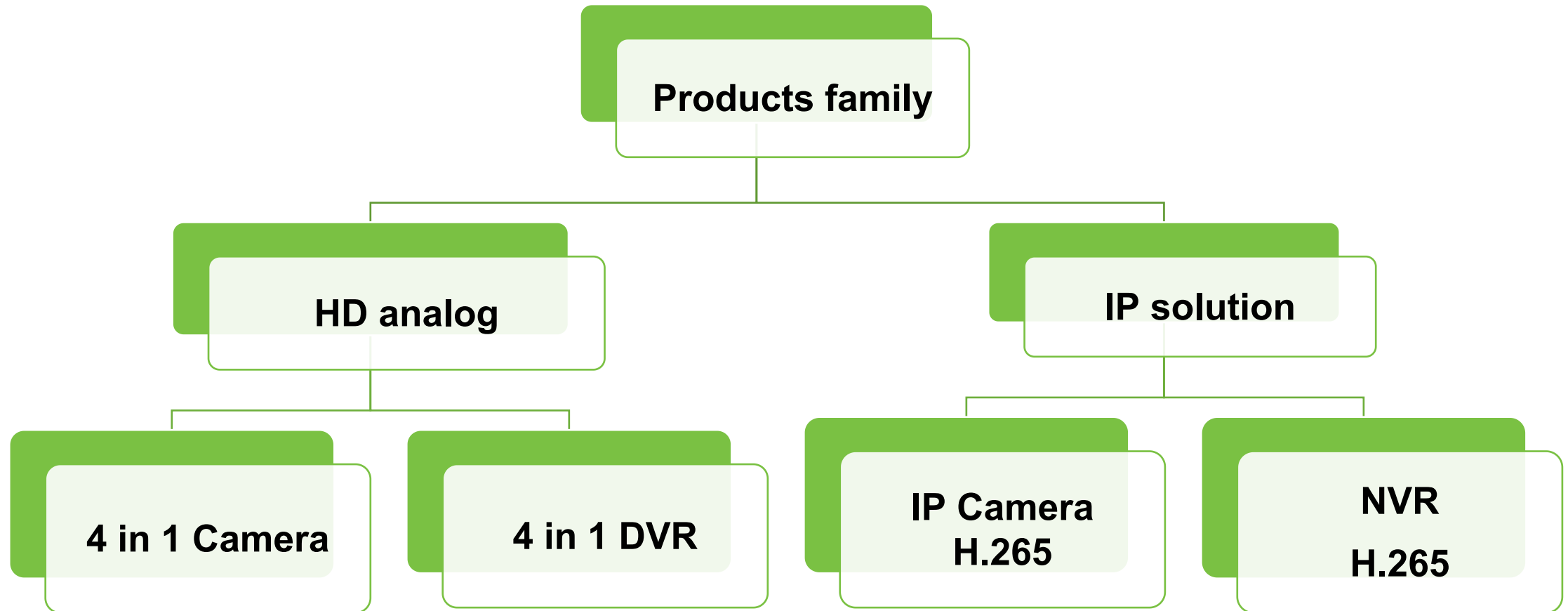


### Extraordinary lightning proof design

Self PCBA layout and high quality IC/resistance component chosen

6KV anti-lightning/ double ESD protection, which is much better than regular 3KV or even none from cheap assembler/factory.

***Innovative Mechanism Design***



## 4 in 1 Camera

	Resolution	Chipset+Sensor	Lens	IR distance	Launch date
L series	1080p	V30E+F22	3.6mm/2.8mm	10-20m	July,2017
E series	1080p	V30E+IMX323	3.6mm/2.8mm	10-20m	July,2017
	1080p	V30E+IMX323	2.8-12mm	20-30m	July,2017
P series	4MP	8538M+OV4689	3.6mm/2.8mm	10-20m	July 2017
	4MP	8538M+OV4689	2.8-12mm	20-30m	July,2017

Lite series: Target for pricing, volume business,  
support UTC, AHD/TVI/CVI/CVBS

Pro series: Excellent picture quality,  
Support UTC, AHD/TVI/CVI/CVBS (2MP)  
AHD/TVI/CVBS(4MP)

# 1080P/4MP HD Analog Camera

**ZKT**<sub>Eco</sub>

New



4MP

## BS-34F12K

3.6 mm  
IR 10-20m  
True WDR  
AHD  
FH8538M+OV4689

## ES-34F12H

3.6mm  
IR 10-20m  
True WDR  
AHD  
FH8538M+OV4689

## DL-34F26B

2.8-12mm  
IR 20-30m  
True WDR  
AHD  
FH8538M+OV4689

1080P

## BS-32D12K

3.6 mm  
IR 10-20m  
DWDR  
4-in-1  
FH8536E+F22

## BS-32E12K

3.6 mm  
IR 10-20m  
Low Light  
4-in-1  
FH8536E+IMX323

## ES-32D12H

3.6mm  
IR 10-20m  
DWDR  
4-in-1  
FH8536E+F22

## ES-32E12H

3.6mm  
IR 10-20m  
Low Light  
4-in-1  
FH8536E+IMX323

## DL-34D26B

2.8-12mm  
IR 20-30m  
DWDR  
4-in-1  
FH8536E+F22

## DL-34E26B

2.8-12mm  
IR 20-30m  
Low Light  
4-in-1  
FH8536E+IMX323

# 4 in 1 DVR

ZKTeco



Series	CH	Max. resolution	Output	Audio	HDD	Series	CH	Max. resolution	Output	Audio	HDD
1080N	4ch	4*1080N@25fps	HDMI/VGA	Yes	1*8TB	4.0MP@8fps	4ch	4*4.0MP@8fps	HDMI/VGA	Yes	1*8TB
	8ch	8*1080N@12fps					8ch	8*4.0MP@8fps			1*8TB
	16c h	16*1080N@12fps					16c h	16*4.0MP@8fps			2*8TB
1080P	4ch	4*1080P@15fps				5.0MP@11fps	4ch	4*5.0MP@11fps			1*8TB
	8ch	8*1080P@12fps			8ch		8*5.0MP@11fps	1*8TB			
	16c h	16*1080P@12fps			8ch		8*5.0MP@11fps	2*8TB			
	16c h	16*1080P@12fps									2*8TB

# Benefit of new 4 in 1 DVR

- 1- **Universal cameras signal supported, AHD/TVI/CVBS/IP.**
- 2- **Higher Resolution up to 5MP,**  
4MP 8f/s series, recording as 8f/s, live view as 15f/s.  
5MP 11f/s series, recording as 11f/s, live view as 20f/s.
- 3- **Support up to 2K HDMI output. (4MP/5MP DVR)**
- 4- **Support H.264+ compression,**  
Under the same picture quality (resolution, frame rates) settings:
  - ✓ same HDD capacity enables longer time recording
  - ✓ same recording period costs less storage capacity
- 5- **Friendly GUI**
  - Easy Installation
  - Smooth Work Flow
  - Intuitive Operation
  - Rich Bandwidth
  - Streaming Optimizing



# Main functions

- H.264 and H.264+ compression, work with TP chipset.
- Auto detection for AHD/TVI/CVBS mode.
- Could switch to NVR mode to work as pure NVR
- Onvif 2.3 supported.
- PC client software ( Windows/iOS ) , cellphone app ( Android/iOS )




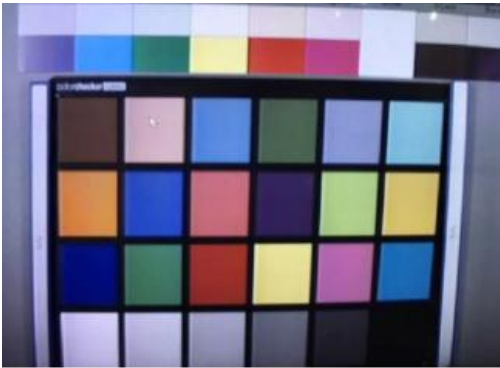


## DVR channels config

Local		IP			
	5M	1080P	960P	3M	5M
<input checked="" type="checkbox"/>	4	.	.	.	.
<input type="checkbox"/>	2	.	.	.	2
<input type="checkbox"/>	.	8	8	.	.
<input type="checkbox"/>	.	.	.	.	4
<input type="checkbox"/>	.	.	.	4	.

Playback channel: 4  
Maximum number of preview: 4

OK Cancel

# Performance Comparison

Signal Company	TVI	AHD	CVI
ZKTECO  (better color performance)			
Assembler			

# New H.265 IP Camera



Resolution	Chipset+Sensor	Lens	IR distance	Mass production
2MP (low light)	3518CV300+IMX323	3.6mm/2.8mm	10-20m	Aug,2017
2MP(starlight/WDR)	3518CV300+IMX290	3.6mm/2.8mm	10-20m	Aug,2017
4MP(WDR)	3516D+OV4689	3.6mm/2.8mm	10-20m	Aug,2017
	3516D+OV4689	Motorized 2.8-12mm	20-30m	Aug,2017
5MP (starlight)	3516A+IMX178	Motorized 2.8-12mm	20-30m	Sep,2017
8MP( WDR)	3516A+IMX274	Motorized 2.8-12mm	20-30m	Sep,2017

# H.265 NVR

**ZKTeco**



Compression	CH	HDD	spcs	Output	Audio
PoE H.265 NVR	4CH	1*8TB	4CH 5MP, 4 PoE	HDMI/VGA	Yes
	8CH	1*8TB	8CH 5MP, 8 PoE		
	16CH	2*8TB	16CH 5MP, 16 PoE		
	32CH	2*8TB	32CH 5MP, 16PoE		
Non PoE H.265 NVR	4CH	1*8TB	4CH 5MP		
	8CH	1*8TB	8CH 5MP		
	16CH	8*8TB	16CH 5MP		
	32CH	8*8TB	32CH 5MP		
	64CH	16*8TB	64CH 5MP		

# Benefit of new H.265 line-up



50% Reduction in Bandwidth



50% Reduction in Bitrate at the Same Visual Quality



50% Reduction in Storage

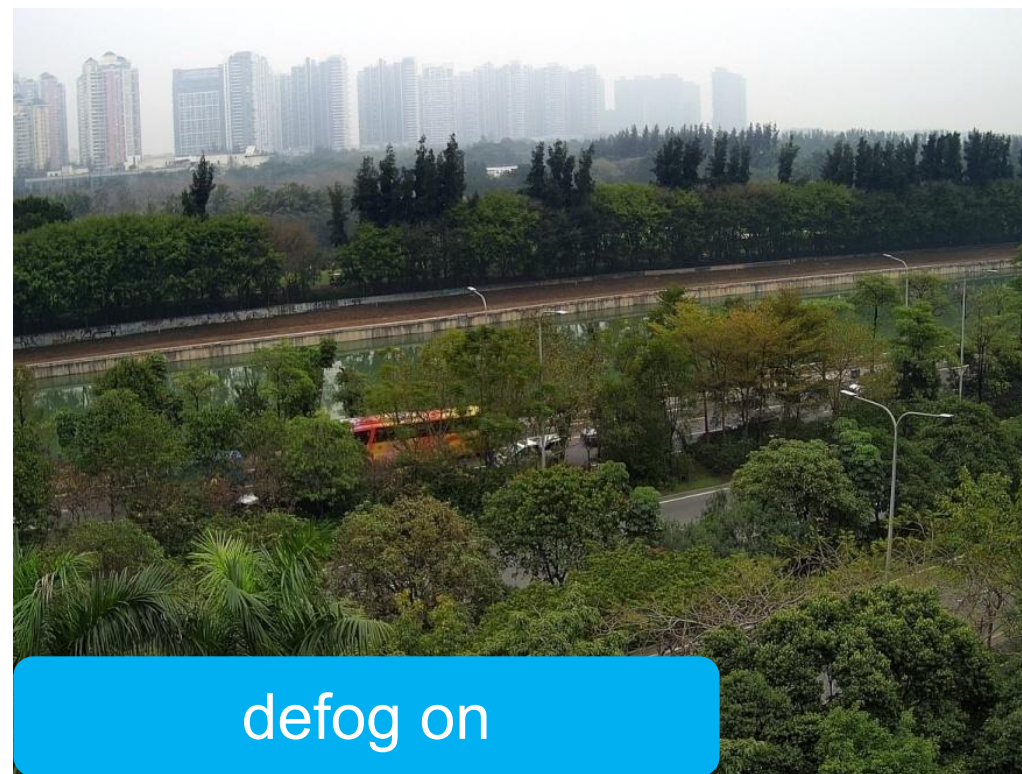
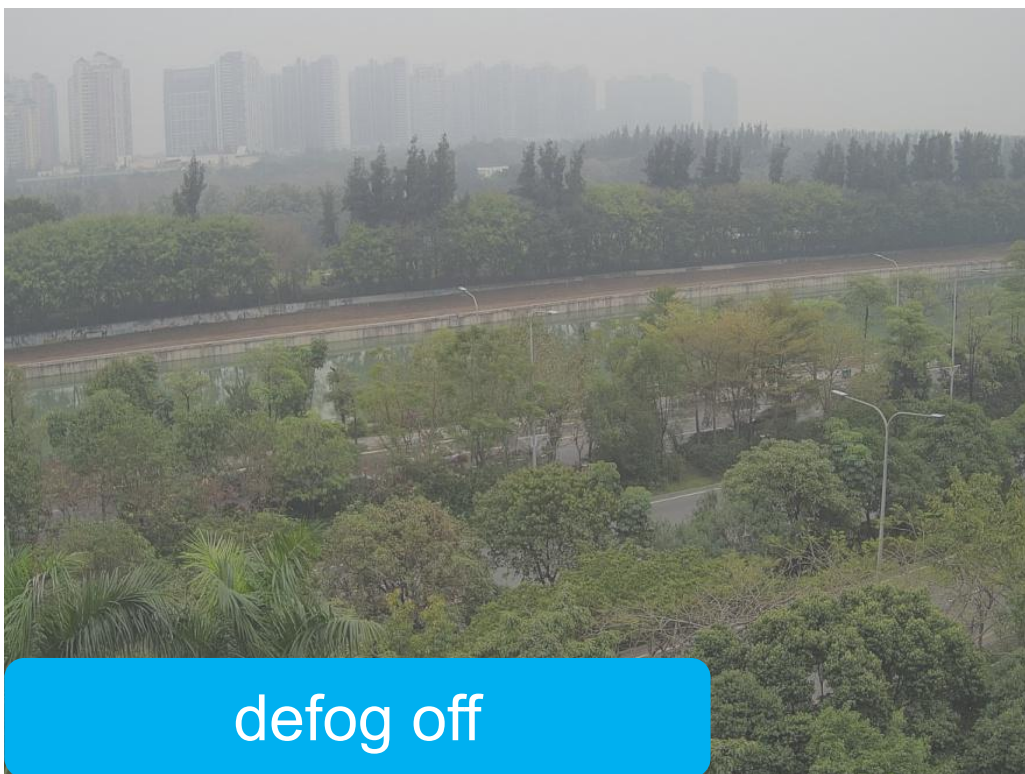


Futureproof Technology up to 8k

H.265—— could save 40%-50% bandwidth and storage, for example, 4K only need 5Mbps.

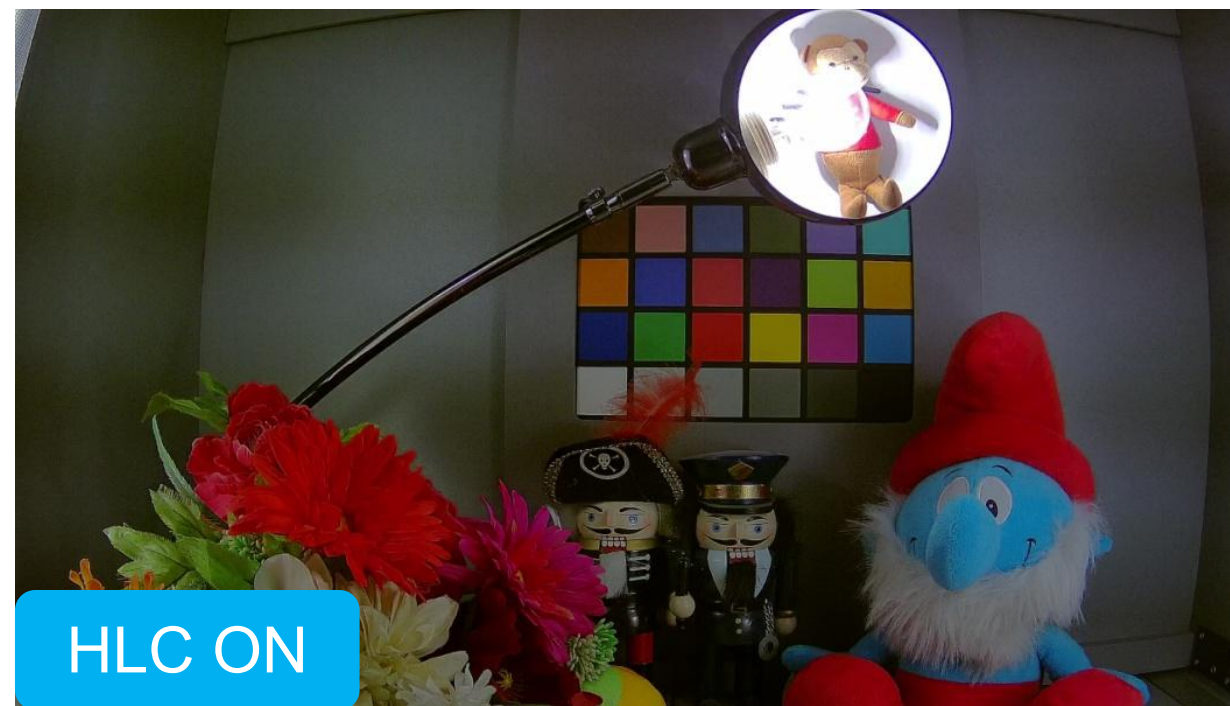


# Benefit of new H.265 line-up

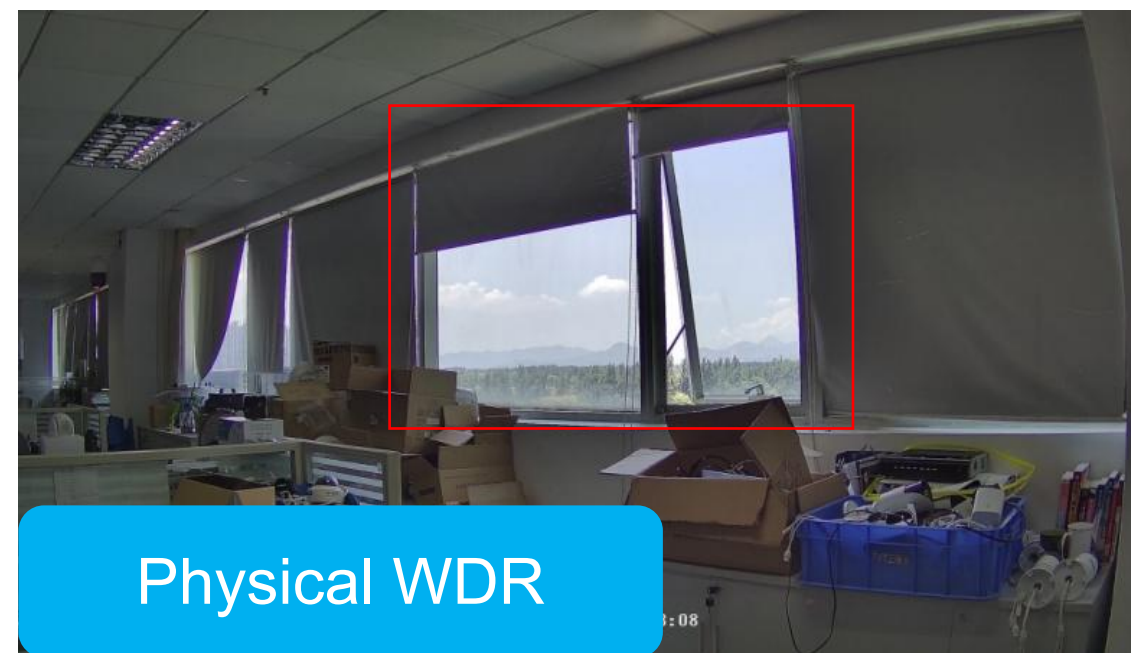




# Benefit of new H.265 line-up



# Benefit of new H.265 line-up



# New CMS and mobile app

## AntarVis ( VMS Platform)

### Features:

Support central management for ZKTECO IP camera and NVR

Support 1/4/9/16/25/36/64 channels preview synchronously

Support up to 36 channels playback synchronously

Support video loss, motion detection, privacy mask and intelligent perimeter alarm

Support PTZ, preset, tour, and scan

Support 3D positioning and virtual mouse operation

Support P2P login and cloud function.

## Mobile App

### Features:

Support 1/4/9/16 channels preview synchronously

Support QR code scanning to add devices via P2P

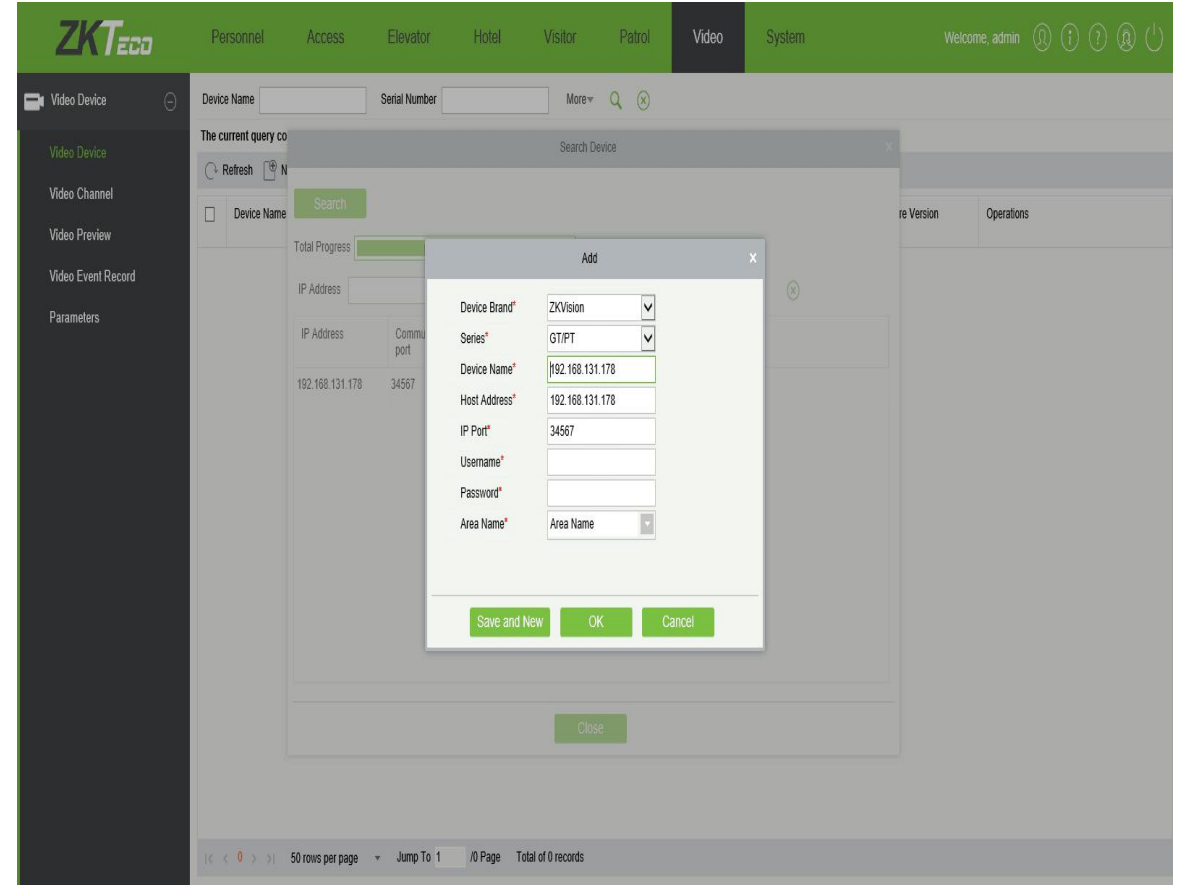
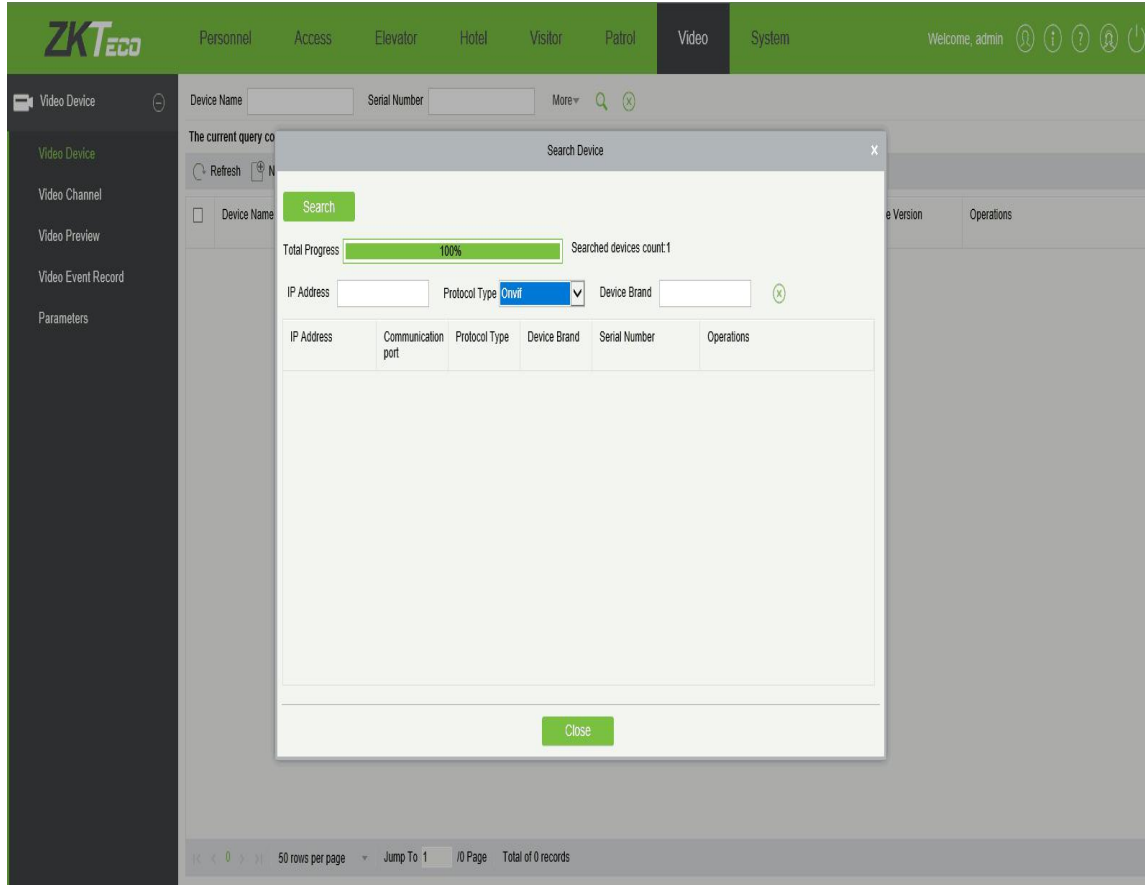
Support local and remote playback for images and video

Support alarm push function

Support Android and IOS version

**Will be launched and updated to App Store in August.**

# Compatible with Biosecurity 3.0





A close-up, low-angle shot of a sailboat's deck and hull. The boat is white with a yellow sail. The deck is made of dark wood. The hull is white with a blue stripe. The boat is moving through the water, creating a wake. The sun is setting in the background, casting a warm glow over the scene. The sky is a mix of orange and blue. The water is a deep blue with white foam from the wake.

Make the world better with us!