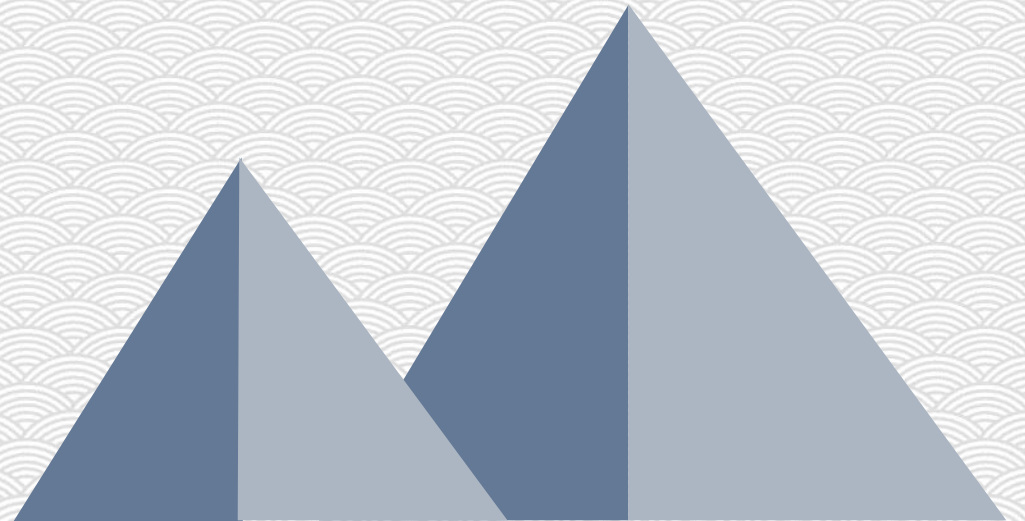


FBL 4000&5000

Orator: Purcell



CONCENT

1 Introduction

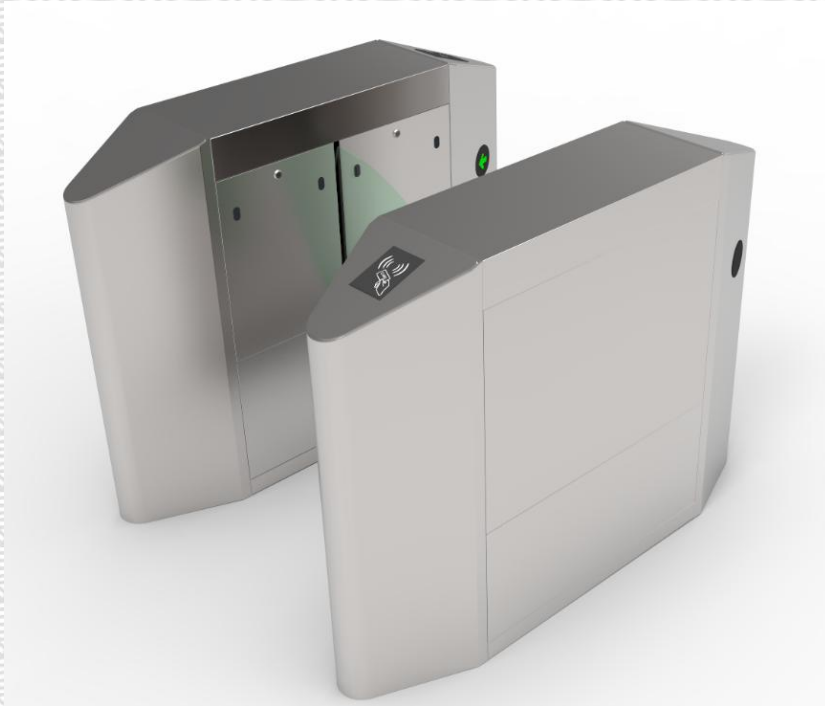
2 Technological Innovation

3 Market Analysis

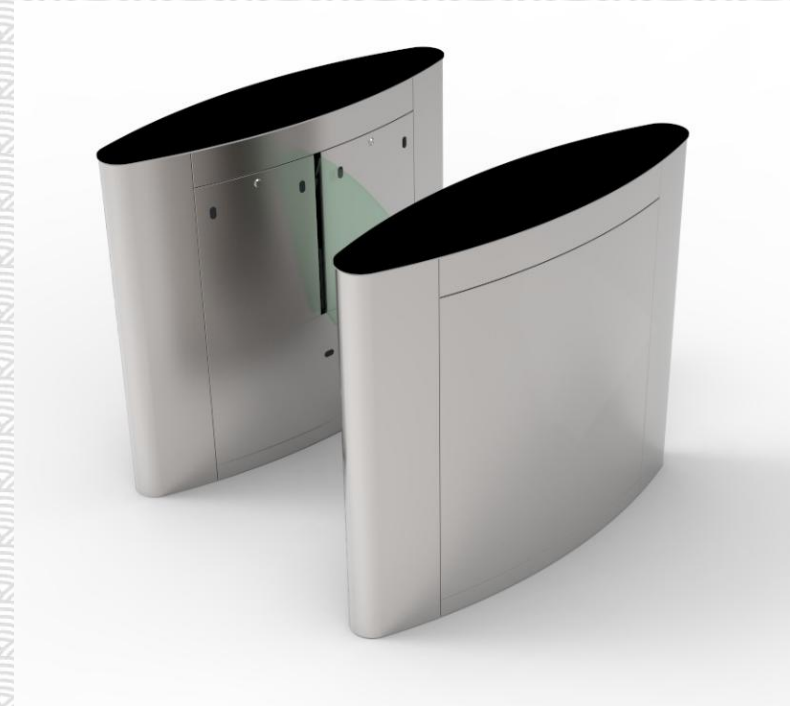
4 Success case

Brief Introduction

FBL 4000&5000 look as same as FB1000&3000, but it should be noted that they aren't same product and can't cooperate with each other.

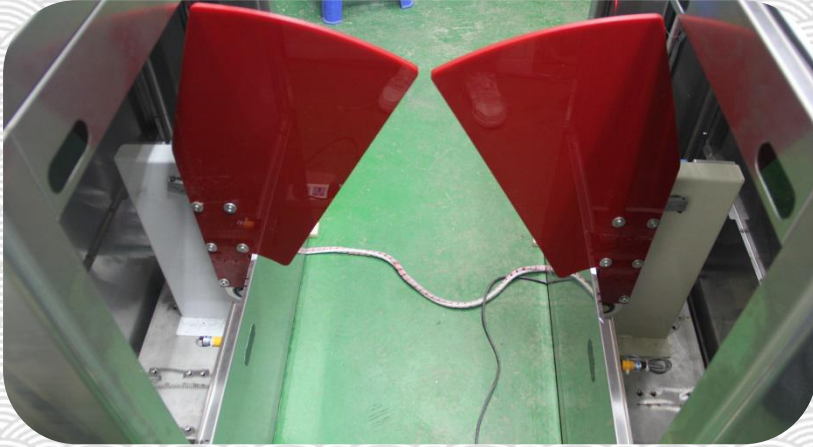


FBL4000



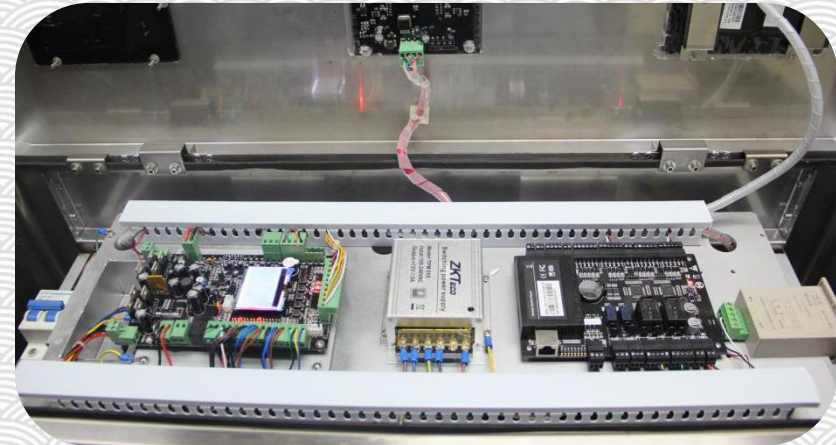
FBL5000

Composition



Structure of the
mechanical system

Electronic control
system



Technological Innovation

The Core Machinery



Simple structure



Less power loss



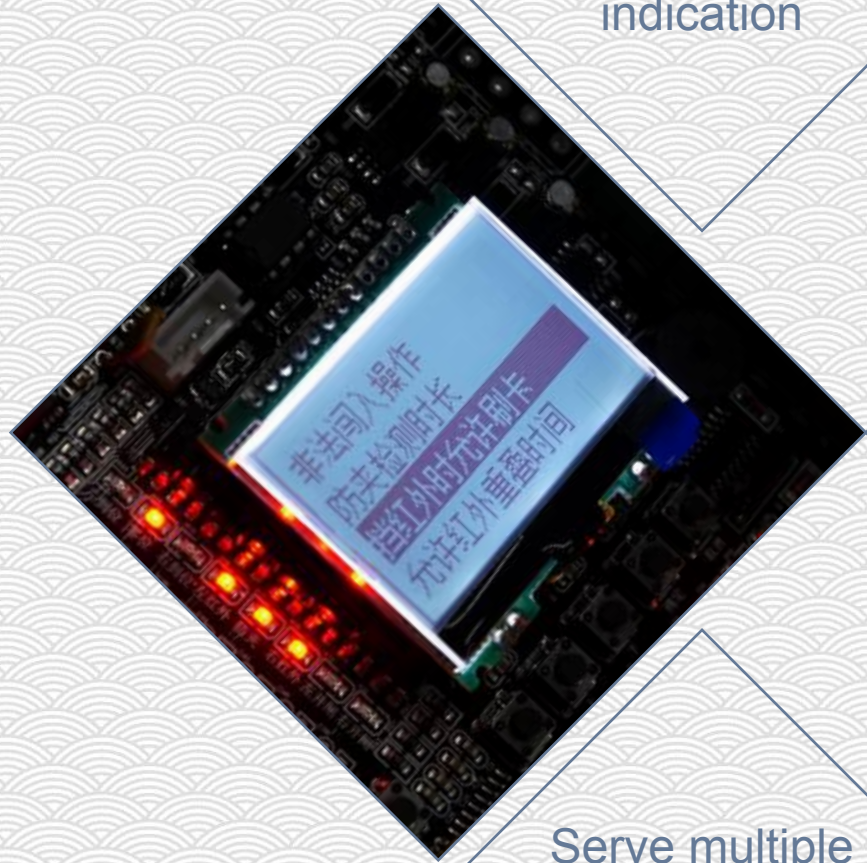
Run smooth and silently



React immediately



Innovation



Malfunction
indication

Need password
to login in

Serve multiple
functions

LCD Screen

Common Function

Working Mode

Passage Control

Open Duration

Memory Function

Motor Speed

Anti-pinch Detection Time

System Initialization

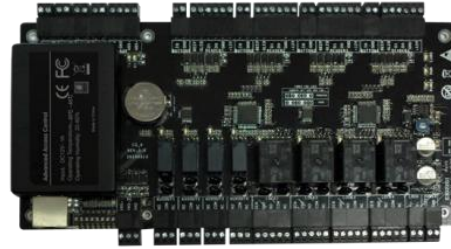
Close Position

Configuration

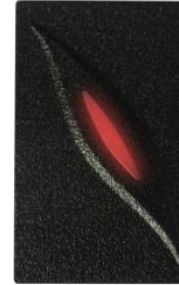
The specific configuration of FBL 4000&5000 can be seen in the diagram.

Control Panel Model	none	C3-200 and a pair of KR100E	inBIO260 and a pair of FR1200/ID
FBL 4000	✓		
FBL 4011		✓	
FBL 4022			✓
FBL 5000	✓		
FBL 5011		✓	
FBL 5022			✓

C3-200



KR100E



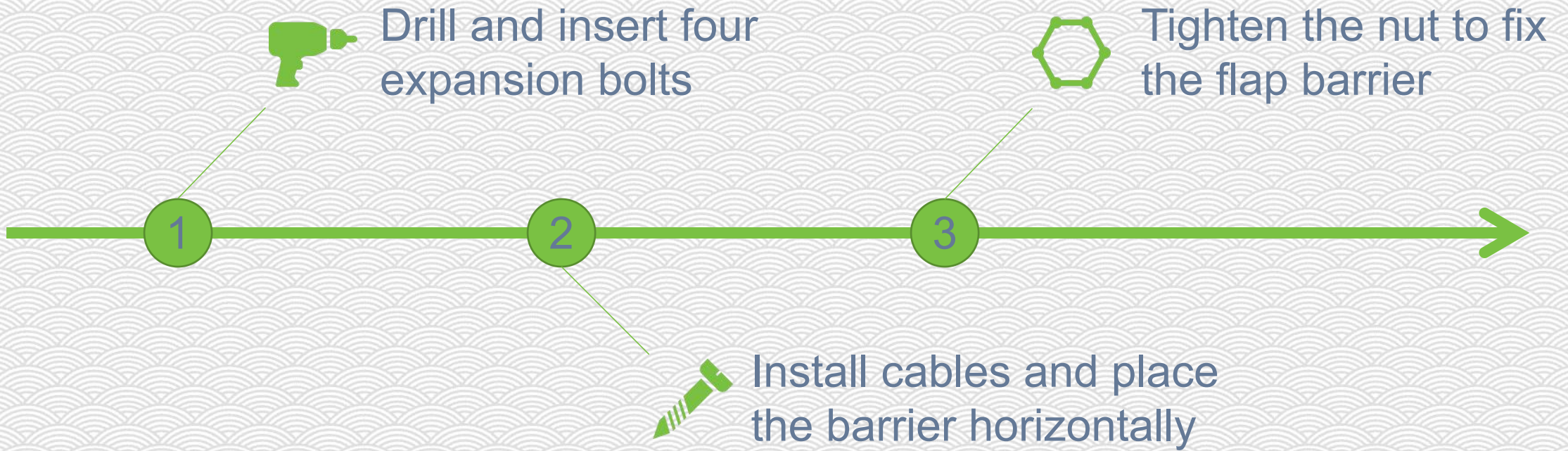
INBIO260



FR1200



Installation



Market Analysis

Market Positioning:

As usual, our products position in mid-low end.

ZKTeco Competitive Advantages:

- Aggressive price on low end products
- Economic, High price-quality ratio
- Biometric module (Competitive feature)
- Worldwide sales network, which could offer faster and better service

Some experience from successful market

- Keep stock of the barrier
- Keep stock of the spare parts
- Specialized team take care of barrier business, for example product manager and technical support
- Modify the device according to customer requirements
- Offer barrier and access control system as a package

Application



Building Entrance



Reception Hall



Restricted Area



And more

Success Case

A building entrance of power company in Saudi Arabia.



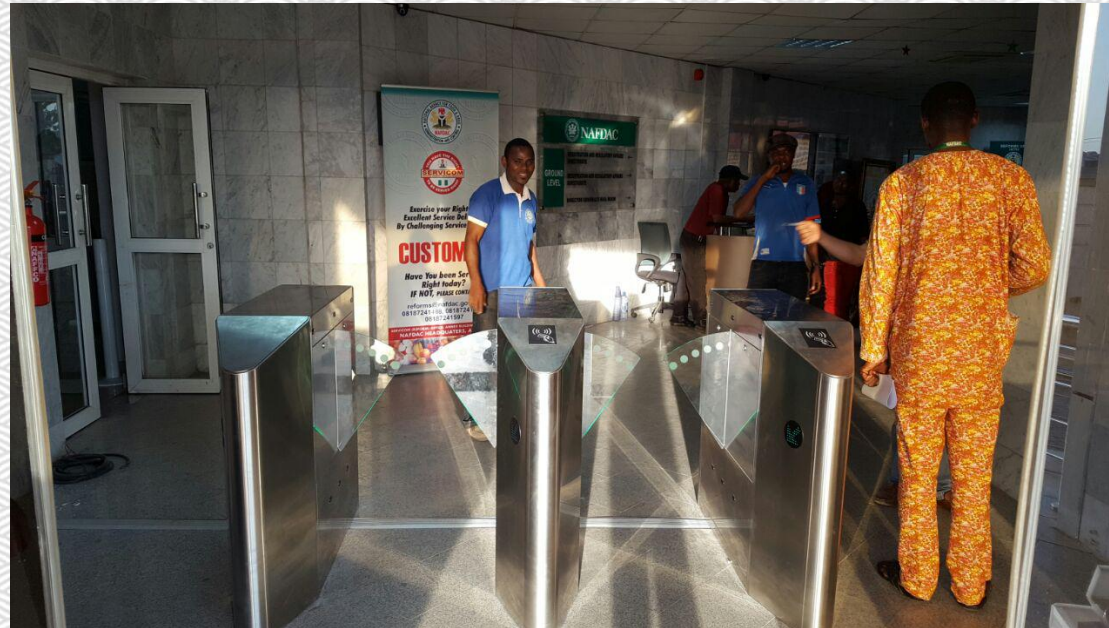
Success Case

A reception hall in a business company in Nanjing, China.



Success Case

A government entrance in Nigeria.



Success Case

A factory entrance in Hong Kong, China.





THANK YOU

Email: purcell.wu@zkteco.com