



ZKX Series

X-ray Luggage Inspection System

By: Rivers

Date: Mar 8st, 2017

1

Product Introduction

1. What is the X-ray machine?

X-ray Inspection system designed to check the luggage/mail. It's widely used in Transportation/ Government and Corporate & Hotel etc. Nowadays, with more and more terrorism attack, the requirement of X-ray machine is increasing rapidly.

2. Why we have to use X-ray machine?

It's not safe to open all the luggage to check, and it's inefficiency. X-ray machine could penetrate the luggage and show all items on the computer, with different color and shape, security guard could find suspicious items easily to ensure the safety.

3. Where do we use X-ray machine?

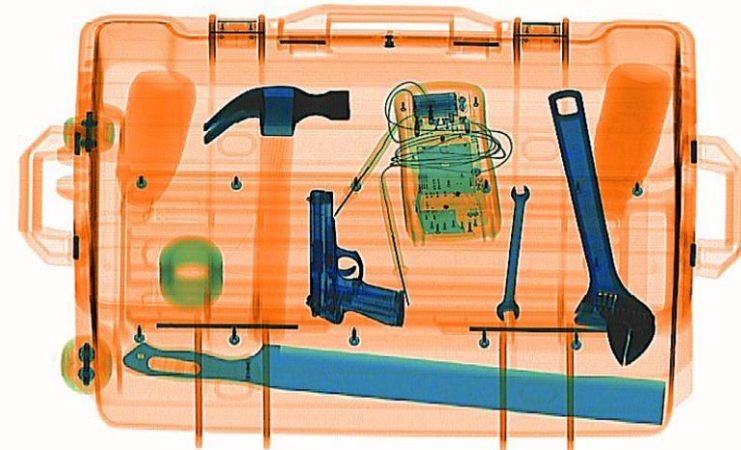
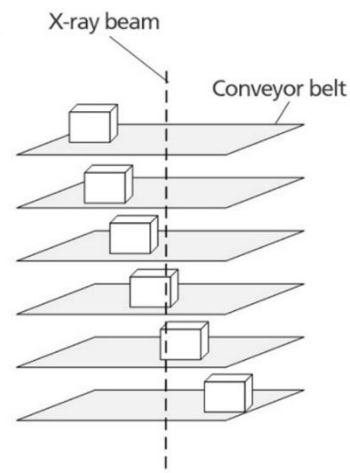
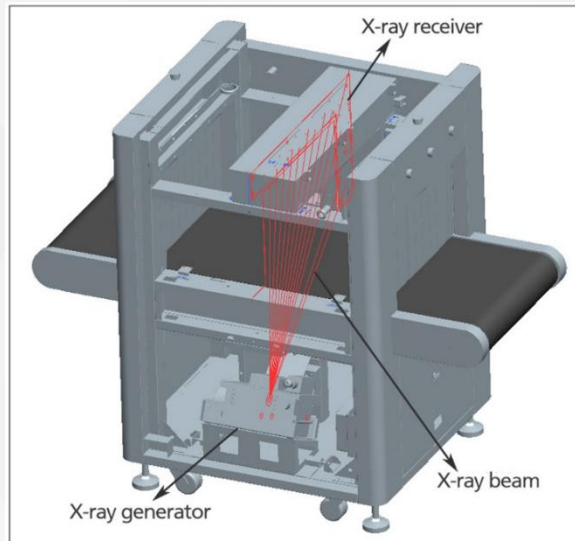
Airport / Train station / Logistics / Hotel / Concert / Prison ...

1

Product Introduction

4. Principle

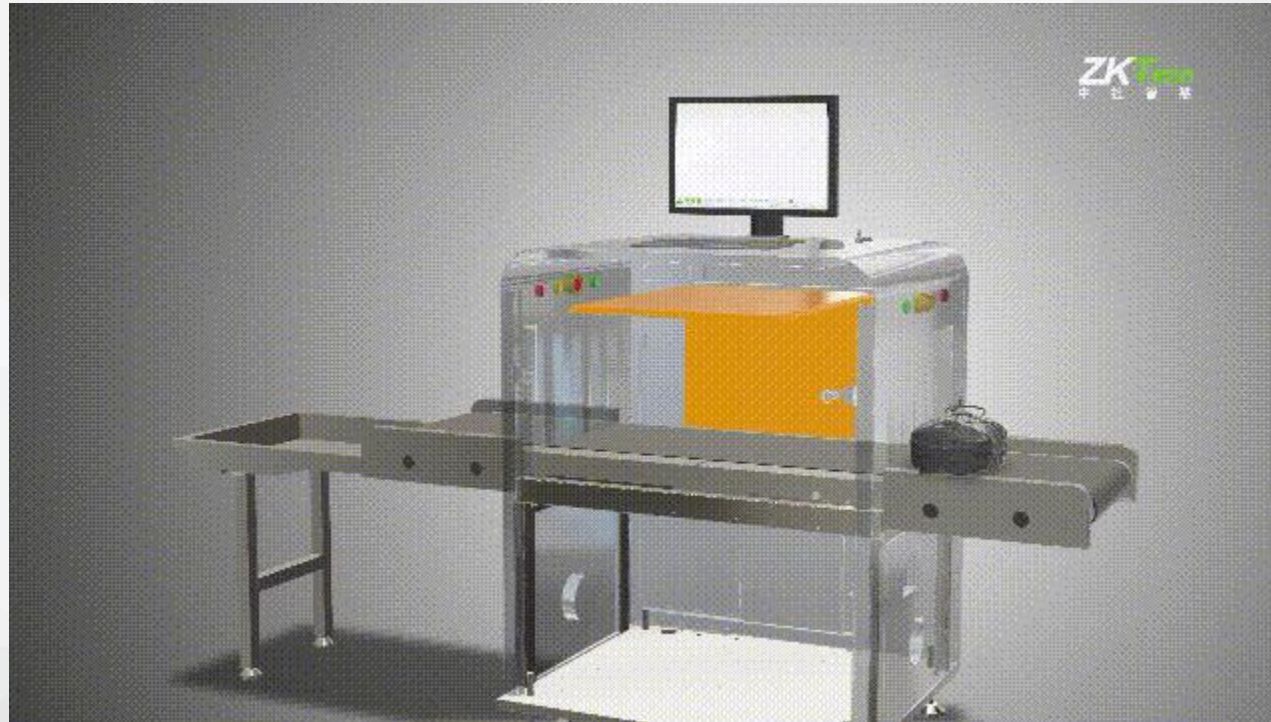
- When luggage goes into the tunnel, the sensors will trigger the X-ray generator to emit X-ray, and penetrate the luggage and then the X-ray receiver will output the electronic signal analysis with image algorithm, finally display on the screen.
- Dual Energy machine can display different colors to denote different materials:
Orange: Organic (liquid / daily chemical / food/ drug)
Green: Mixture (plastic / rubber)
Blue: Metal & Inorganic
Black: High density material that X-ray could not penetrate (such as: Heavy metal)



1

Product Introduction

5.Working process demonstration (Please Press SHIFT+F5 to watch it)



5. Parts

- X-ray Generator: The core part of X-ray inspection system, generate X-ray when items go into the tunnel.
- X-ray Receiver: Receive X-ray that penetrate through item, and transform it to electric signal.
- Transmission System: Transport items from side to side.
- Item Detect Sensor: Installed at the tunnel entrance, trigger X-ray generator once anything go into the tunnel.
- Computer: An industrial mother board was installed in every ZKX series products.
- Console board: A specific console board is provided except 5030A.

Main Function & Parameter

1. Major Functions

- High density material alarm: If system found some material has high density that X-ray could not be penetrated, alarm will triggered automatically.
- Explosive/ Drug auxiliary detection: By estimating material's molecular weight, system could detect suspicious explosive or drugs approximately. However, this is only an auxiliary system, there is no 100% accuracy been guaranteed .
- TIP (Threat Image Projection): Project threat image into real time scanning images to improve operator's reaction time and accuracy.
- Fingerprint log in: Improve the security level, and prevent any problem due to forgetting password.

2. Major Parameters

- Steel penetration: how thick of the steel that X-ray can go through, and generally defined in millimeters (mm).
- Wire resolution= How thin the X-ray can detect, and generally Wire resolution defined in terms of American Wire Gauge (i.e.40 AWG).
(Note: the thinner the wire, the larger the gauge numeration)

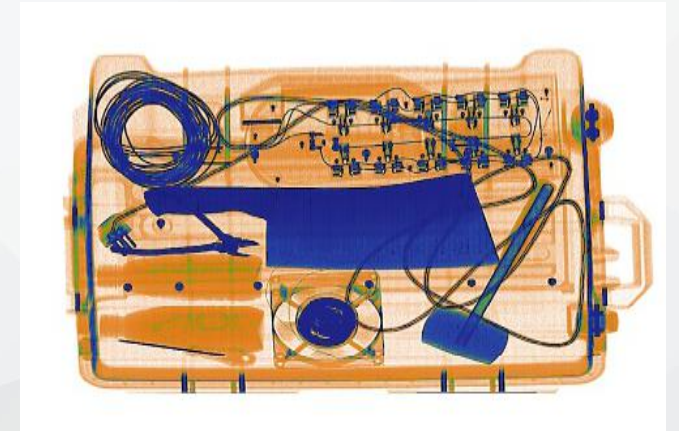
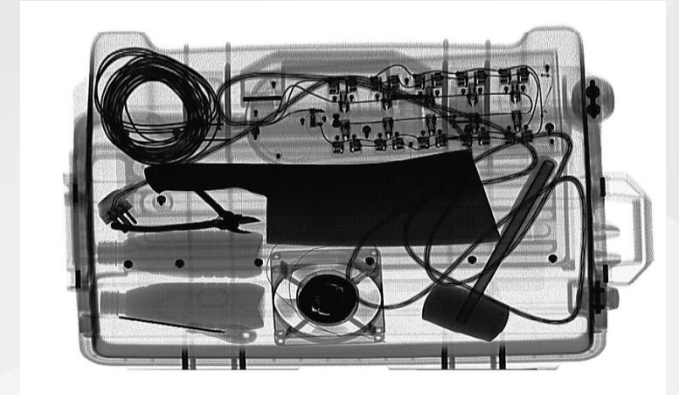
4

Product Image



ZKX 5030A

'5030' indicates the tunnel size is 50cm*30cm, 'A' indicates this machine is Single Energy. Single Energy machine can only display black & white image and pseudo color image.



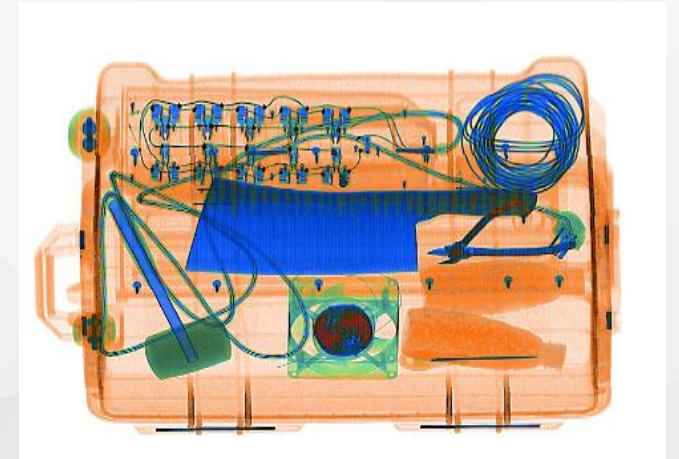
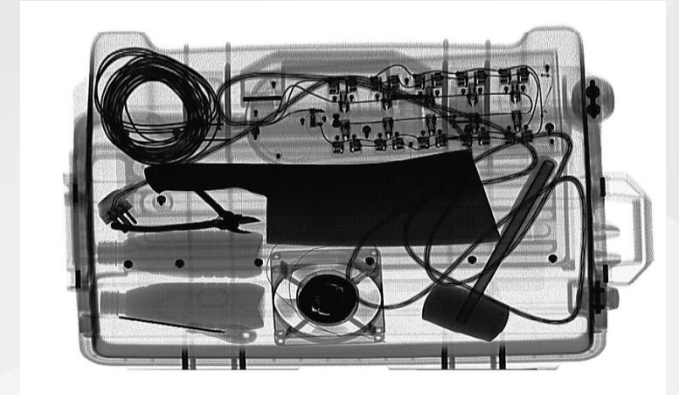
4

Product Image



ZKX 5030C

'5030' indicates the tunnel size is 50cm*30cm, 'C' indicates this machine is Dual Energy. Double Energy machine can display true color image.



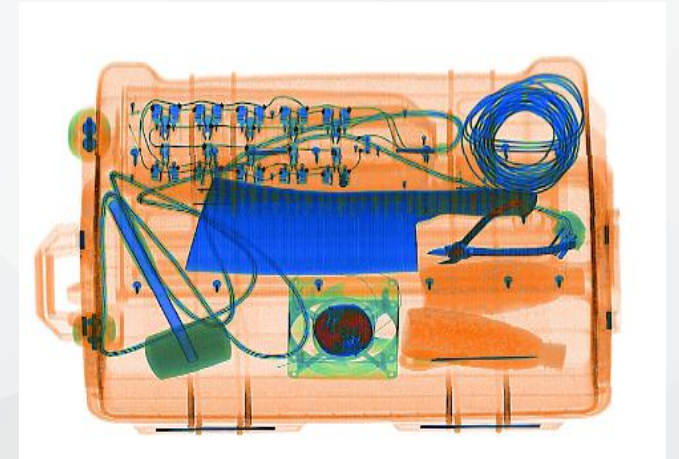
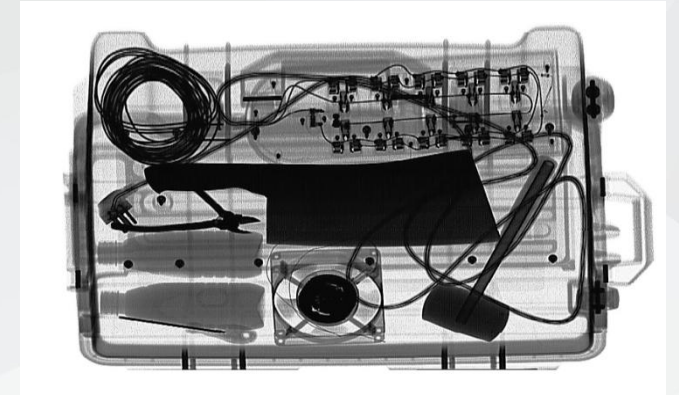
4

Product Image



ZKX 6550

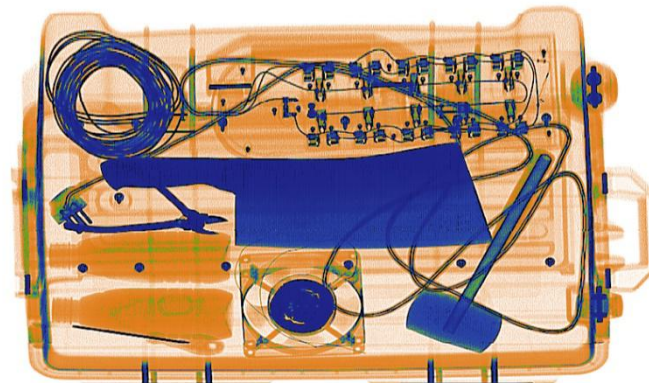
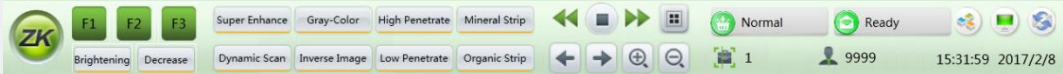
'6550' indicates the tunnel size is 65cm*50cm, This machine is Dual Energy. Double Energy machine can display true color image.



Product Image



Console Board



1. Market Positioning

As a new player in Security Inspection industry, our first generation products will position in mid-low end.

ZKTeco Competitive Advantages:

- **Biometric module. (Competitive feature)**
- Aggressive Pricing Strategy
- Worldwide sales network, which could offer faster and better service.
- Economic, High price-quality ratio

2. Target Costumer

- Government (Court/ Prison/ Information Department)
- Arena / Large scale activities
- Hotel / Cinema / etc.

Product Comparison & Positioning (Compare to ZK products)

	SIZE	APPLICATION	FUNCTION & ACCESSORIES
6550	65*50cm	<ul style="list-style-type: none">• Government• Checkpoint• Arena	<ul style="list-style-type: none">• Biometric Console Desk• Video Surveillance System (Optional)• True-color image display
5030C	50*30cm	<ul style="list-style-type: none">• Government• Hotel	<ul style="list-style-type: none">• True-color image display
5030A	50*30cm	<ul style="list-style-type: none">• Government• Hotel	<ul style="list-style-type: none">• Pseudo-color image display

Product Comparison & Positioning (Other brands' devices)

Competitor	Eastimage/ Nuctech/ FISCAN/ SECUSCAN
Appearance	Modern and Compact Design
Market position	Government and civil market
Conclusion	Decent performance/ Lower total cost of ownership/ Biometric function/ Excellent service

7

Cases



Police station of Tumxuk City, Xin Jiang Province.

7

Cases



People court of Wenzhou City, Zhe Jiang Province.

7

Cases



Zhaoshang Building of Urumchi City, Xin Jiang Province.

7

Cases



Police station of heat-engine plant, Xin Jiang Province.



THANK YOU