

FBL series

Orator: Purcell



01

Brief Introduction

02

Technological Innovation

03

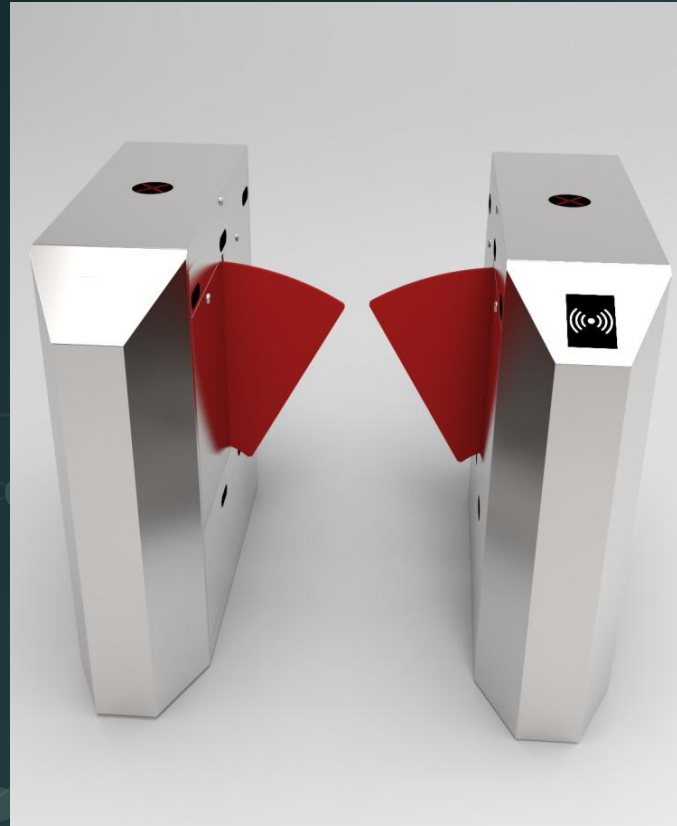
Installation and Application

Brief Introduction

FBL flap barrier series is more compact and elegant.



FBL1000



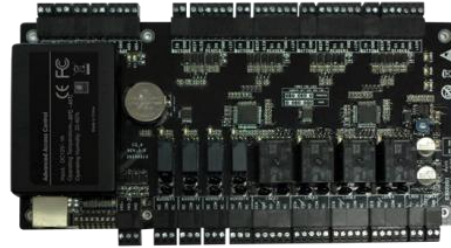
FBL2000

Configuration

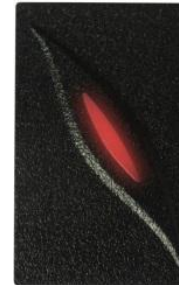
The specific configuration of FBL series can be seen in the diagram.

Control Panel Model	none	C3-200 and a pair of KR100E	inBIO260 and a pair of FR1200/ID
FBL 1000	✓		
FBL 1011		✓	
FBL 1022			✓
FBL 2000	✓		
FBL 2011		✓	
FBL 2022			✓

C3-200



KR100E



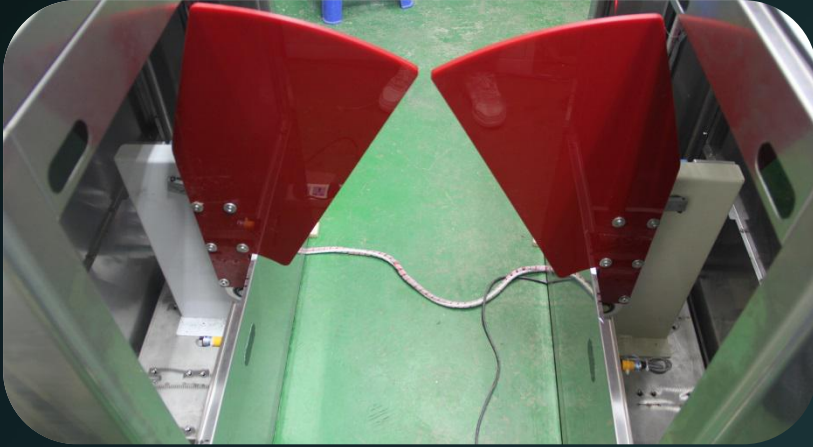
INBIO260



FR1200



Composition



Structure of the
mechanical system

Electronic control
system



Technological Innovation

The Core Machinery



Simple structure



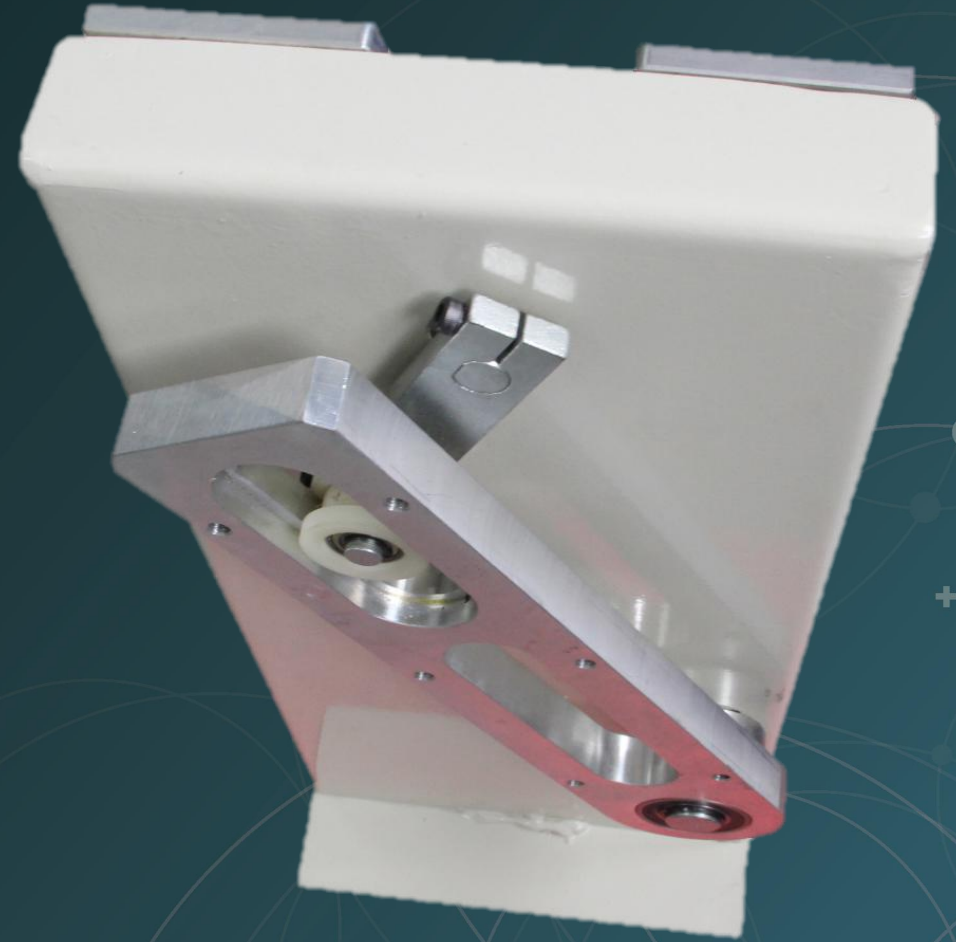
Less power loss



Run smooth and silently

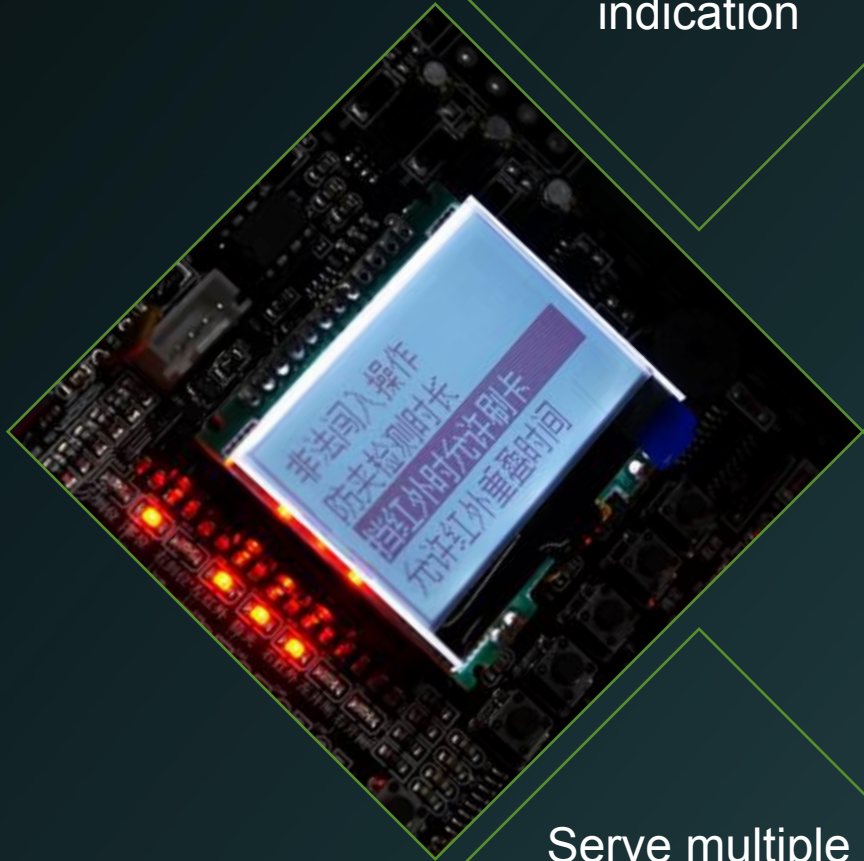


React immediately



Innovation

Malfunction
indication



Need password
to login in

Serve multiple
functions

LCD Screen

Common Function

Working Mode

Passage Control

Open Duration

Memory Function

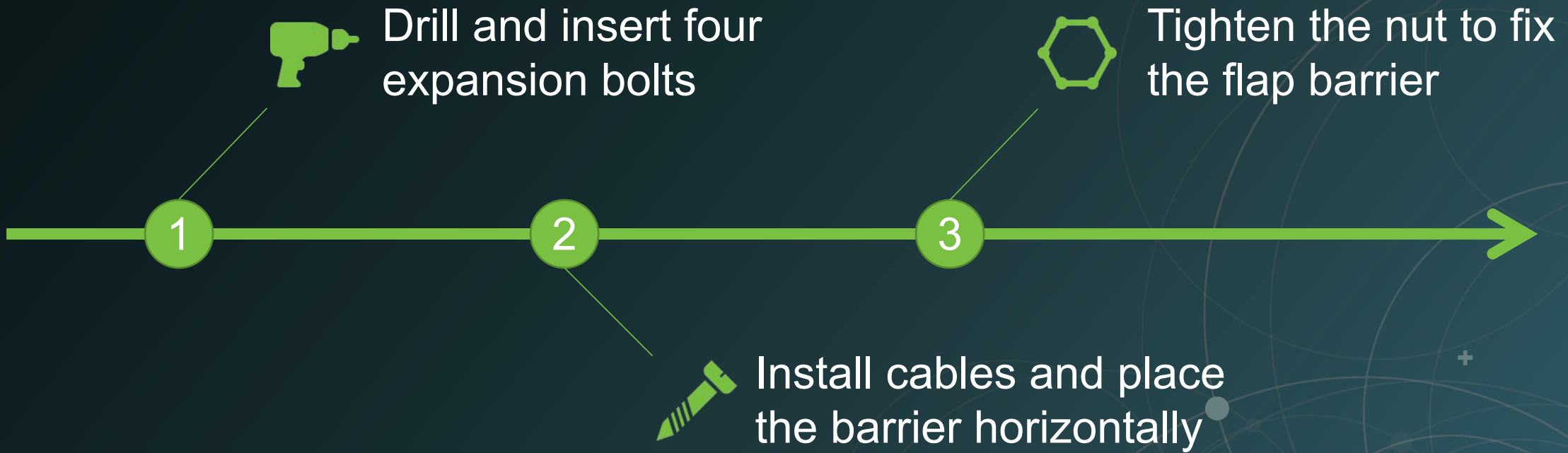
Motor Speed

Anti-pinch Detection Time

Close Position

System Initialization

Installation



Application



Building Entrance



Reception Hall



Restricted Area



Success Case

A building entrance of power company in Saudi Arabia



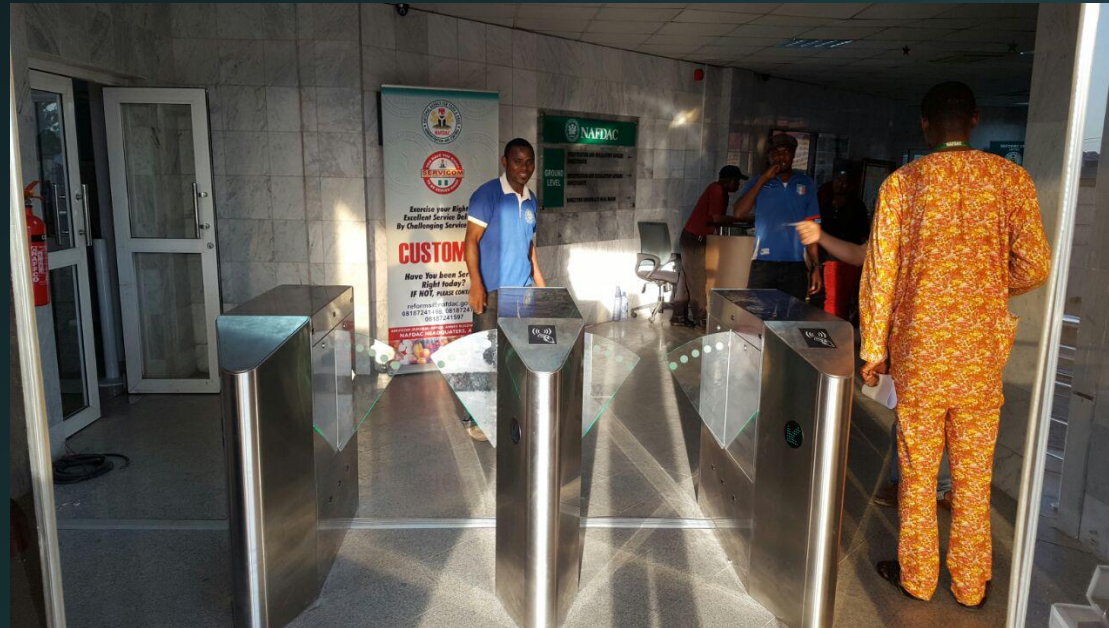
Success Case

A reception hall in Nanjing



Success Case

A government entrance in Nigeria

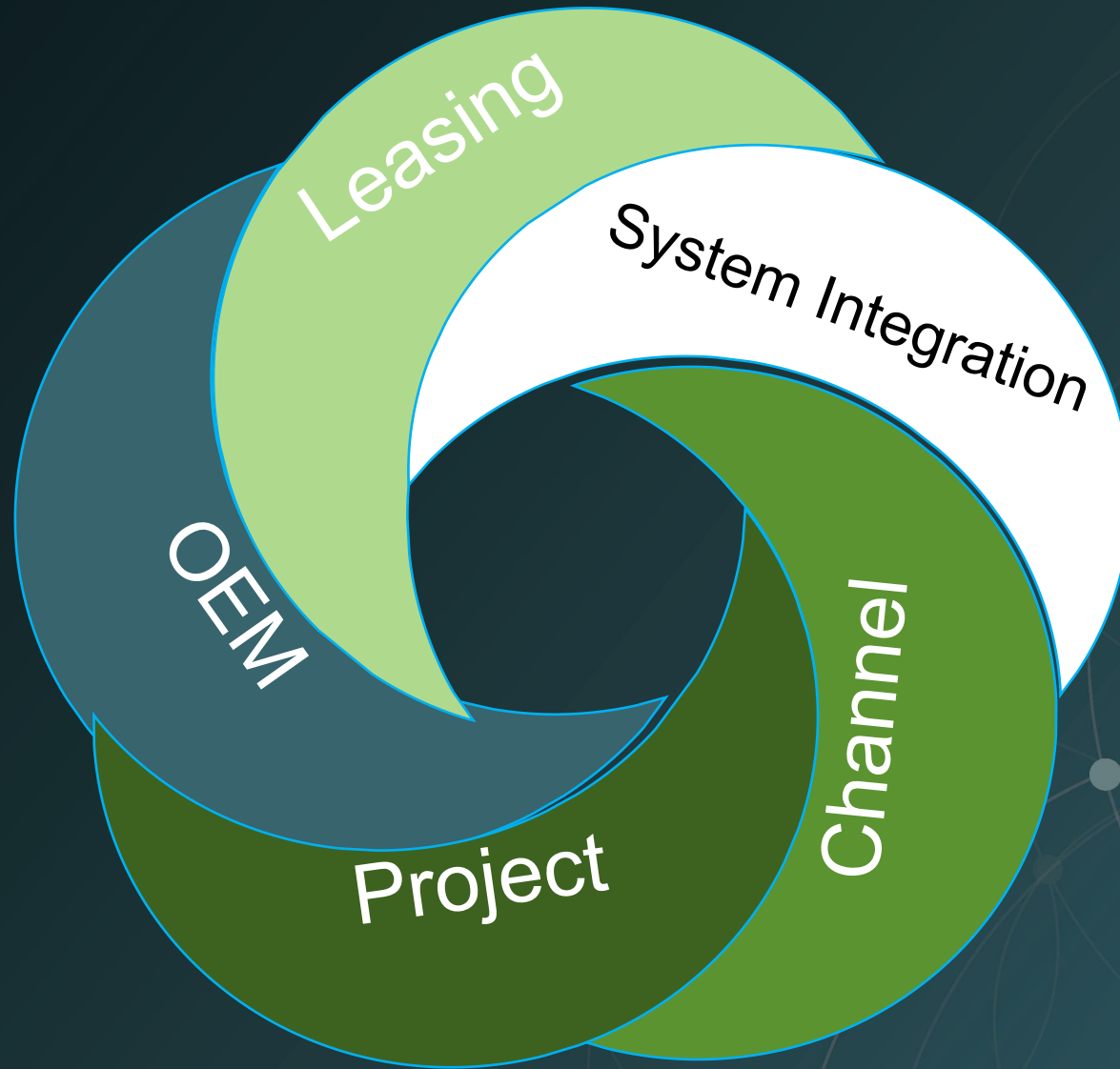


Success Case

A factory entrance in Hong Kong



Business Service



The background is a dark teal color with a complex pattern of thin, light-colored circles and small plus signs scattered across the surface. A large, light gray circle is centered on the page, containing the text 'THANK YOU' and the ZKTeco logo.

THANK YOU

ZKTeco
中 控 智 慧

Email: purcell.wu@zkteco.com