

A large, intricate network of black dots connected by thin lines, forming a circular shape on the left side of the slide. The dots are of varying sizes and are connected by lines of varying thicknesses, creating a complex web-like structure.

## Listing guide

# Premium swing barrier SBTL5000

By: Clyde

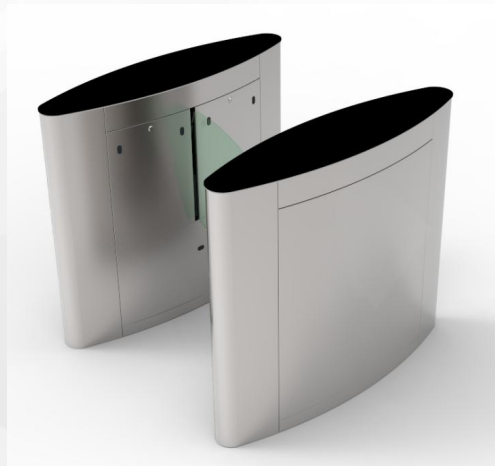
Date: 22 May

# Background Descriptions

---



TS 5000 A



FBL 5000

SBTL5000



# CONTENTS

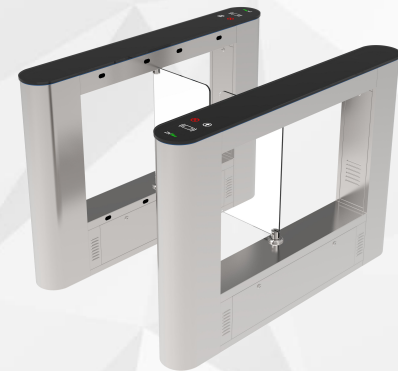
- **1**    **Introduction**
- **2**    **Appearance**
- **3**    **Performance**
- **4**    **Market analysis**

# 1. INTRODUCTION

SBTL5000 as an premium swing barrier, appearance is elegant. It is suitable for using in indoor place.

Benefit from the selection of raw materials and new design, the new product look better than old one.

Not only change the appearance design, but also optimized the inside of machines core.



## Access control equipped

Access control Model	N/A	Card	Card + Fingerprint
SBTL5000	●		
SBTL5011		●	
SBTL5022			●
SBTL5200	●		
SBTL5211		●	
SBTL5222			●

## Readers and controller

SBTL50<sup>11</sup>

Card reader

X2

+

C3-200 controller

SBTL50<sup>22</sup>

Card and  
Fingerprint reader

X2

+

inBIO260 controller

## 2. APPEARANCE



SBTL5000 series



Single lane



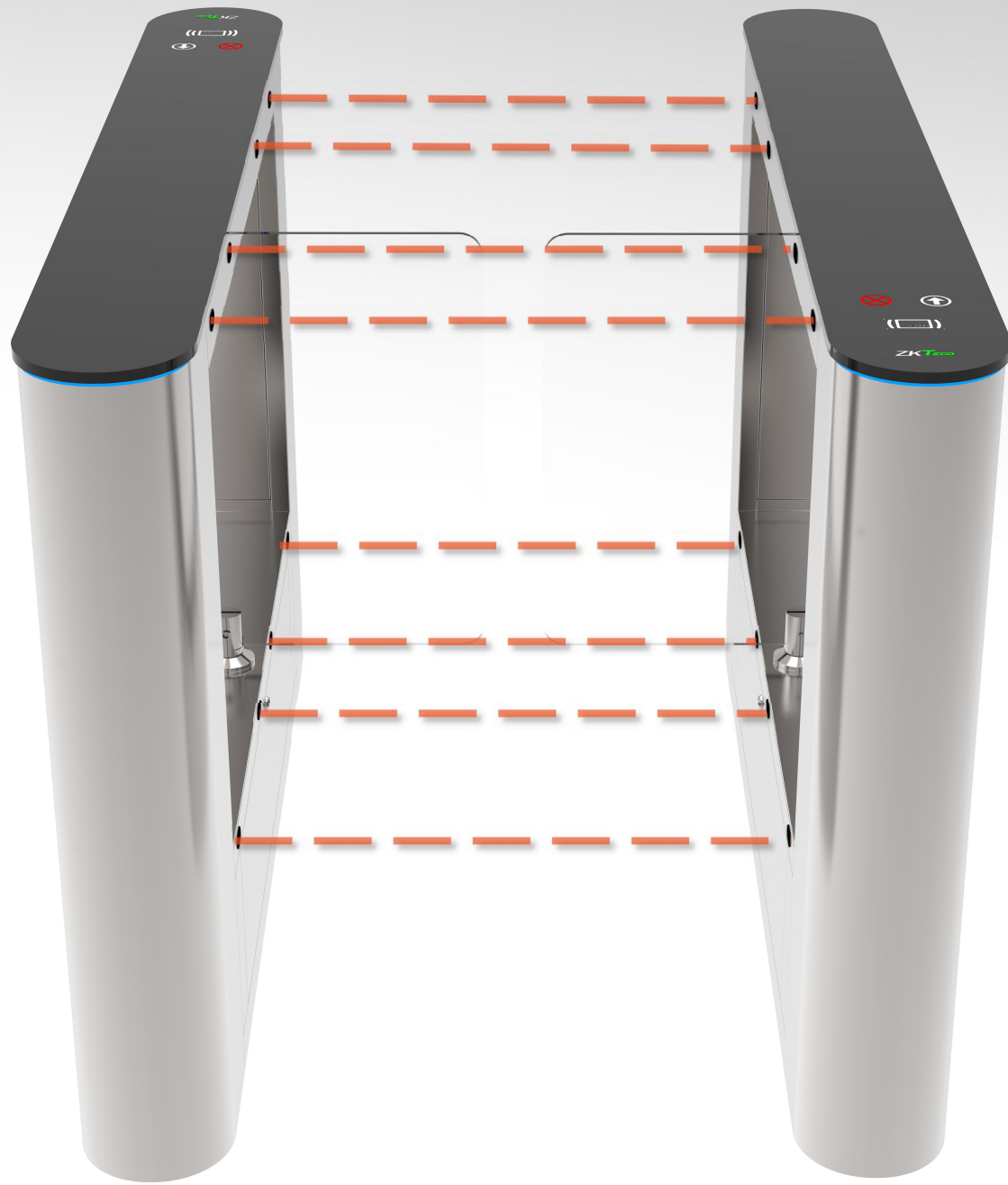
Dual Wing

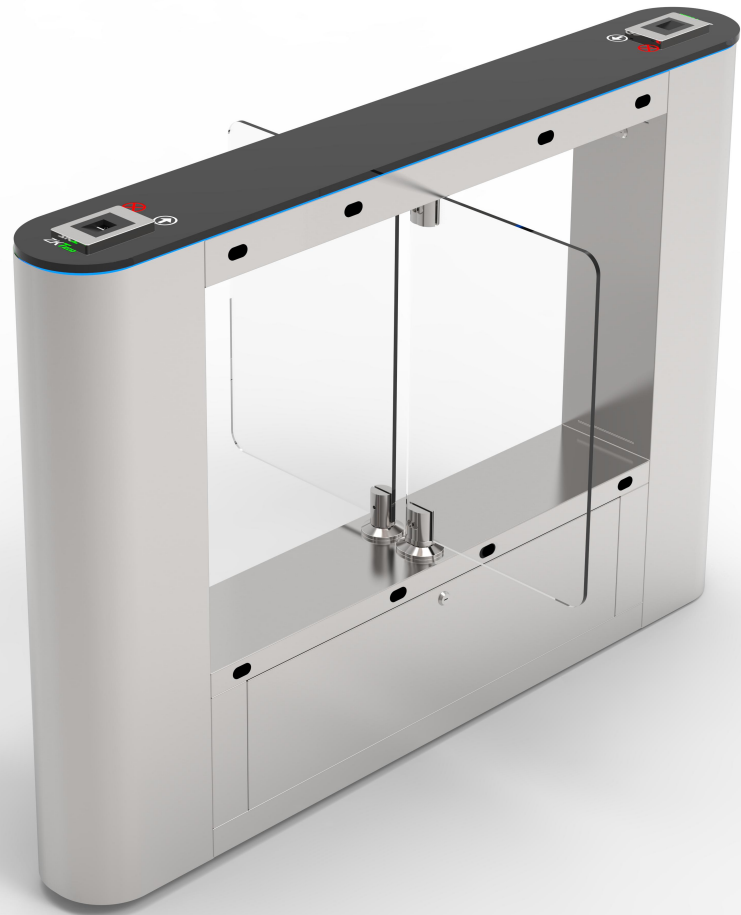
## Multi lanes

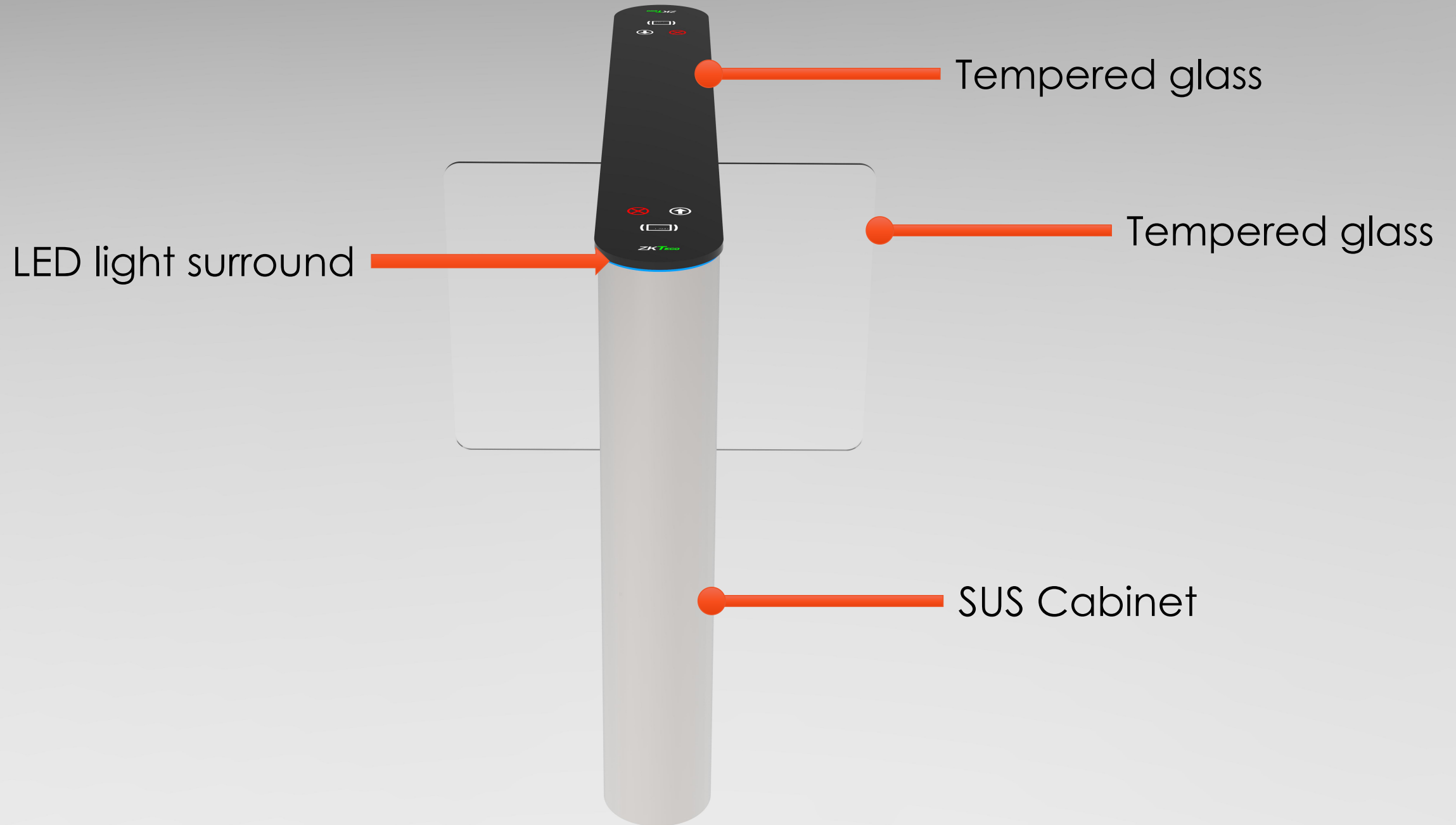




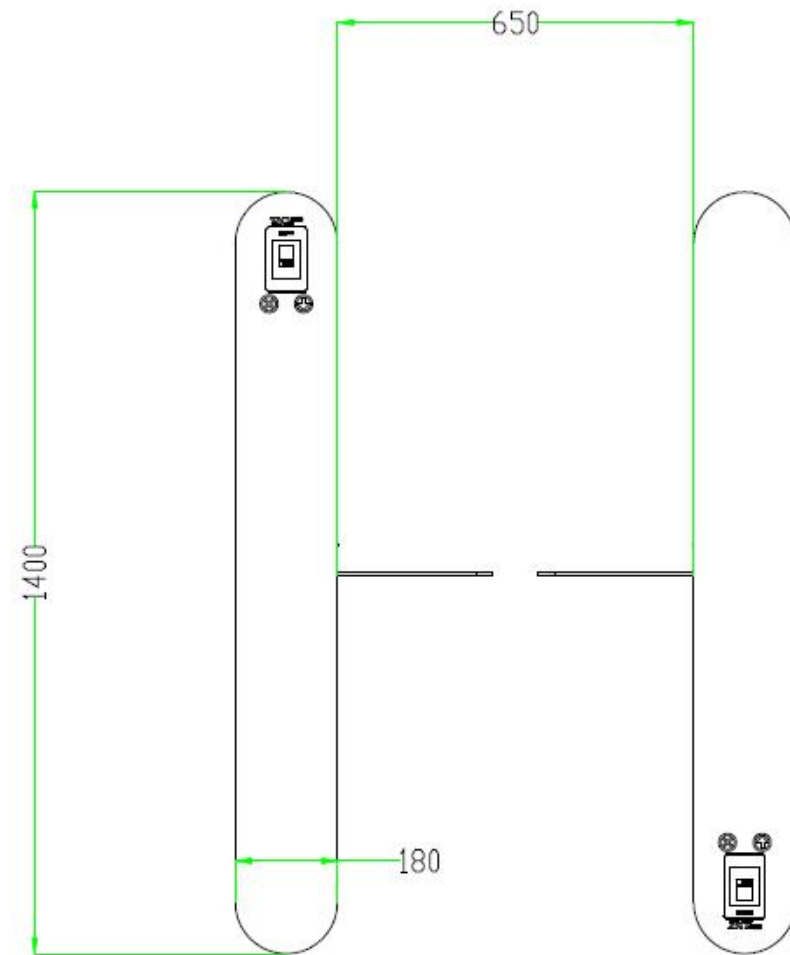
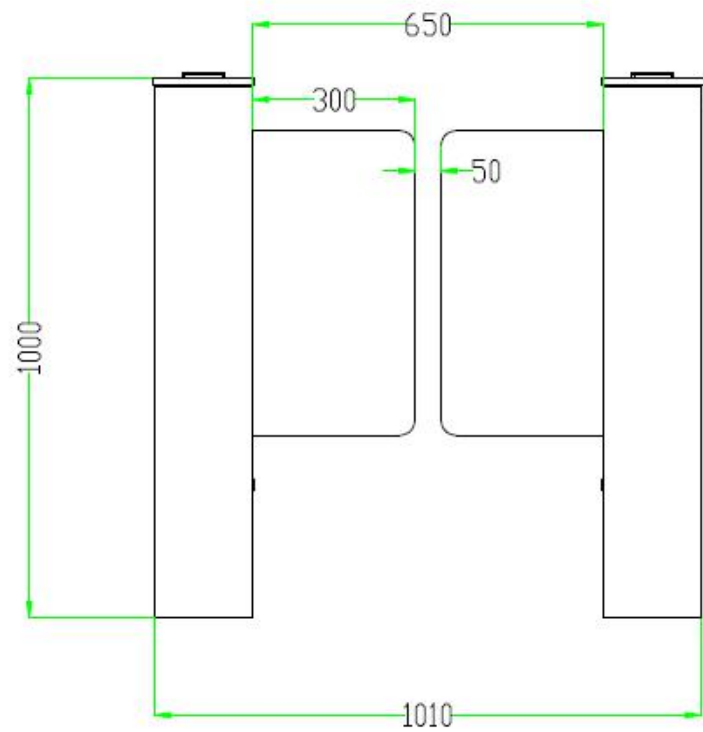




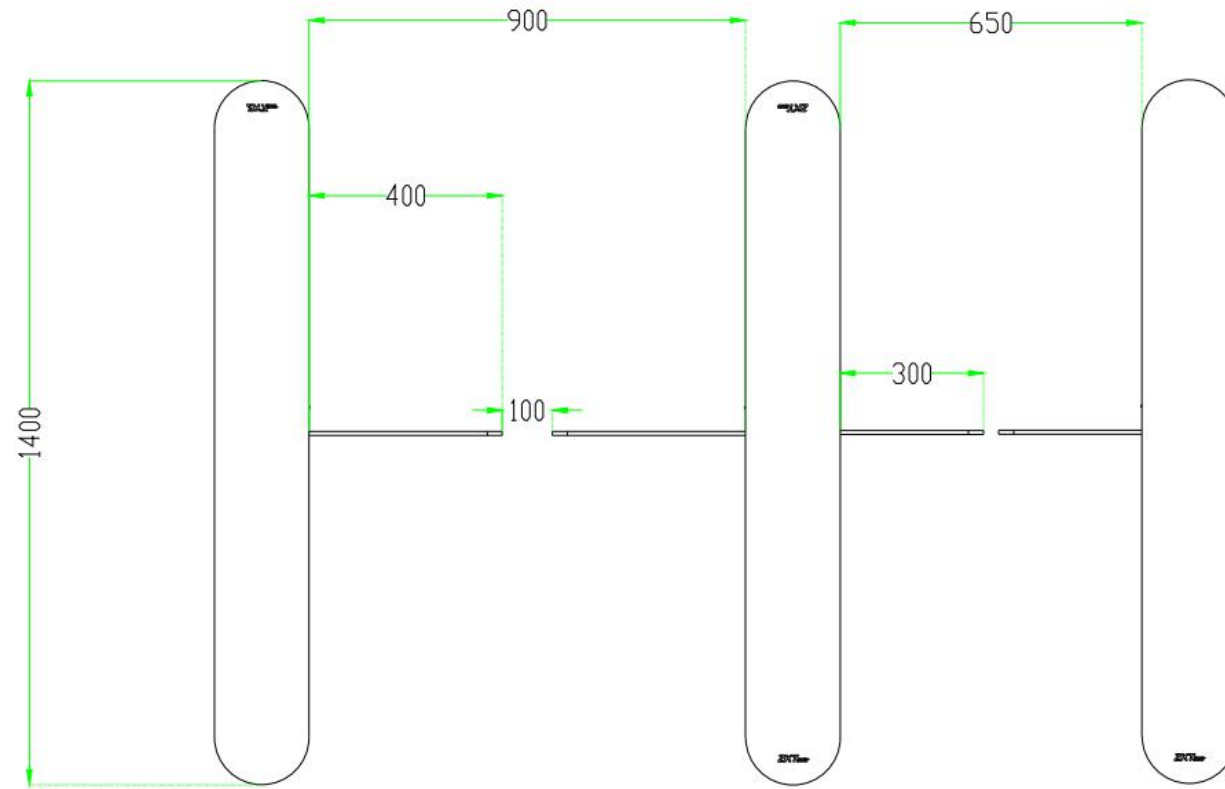




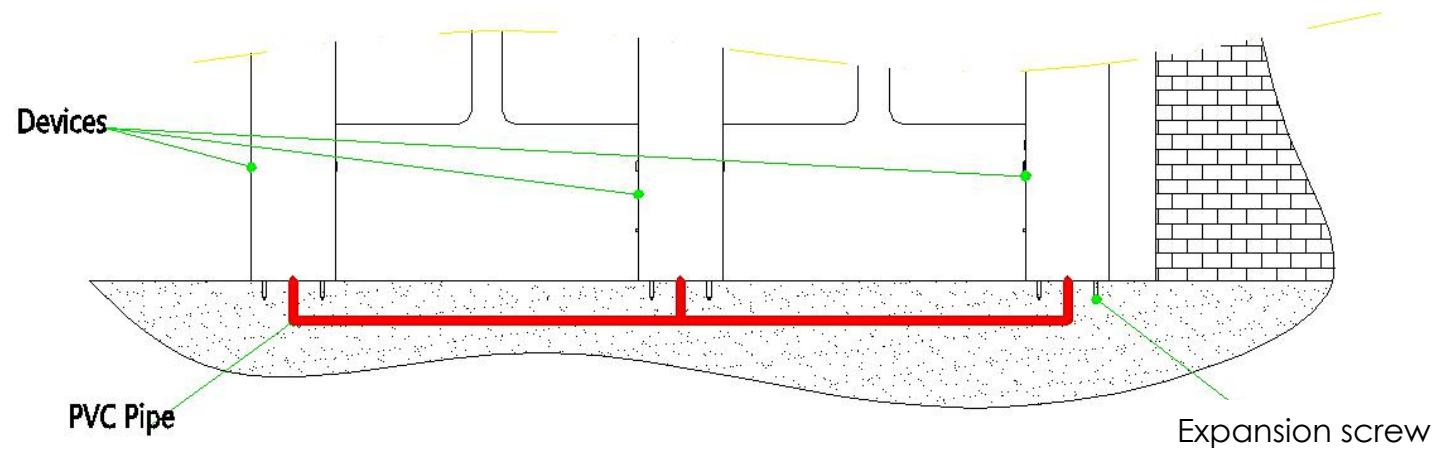
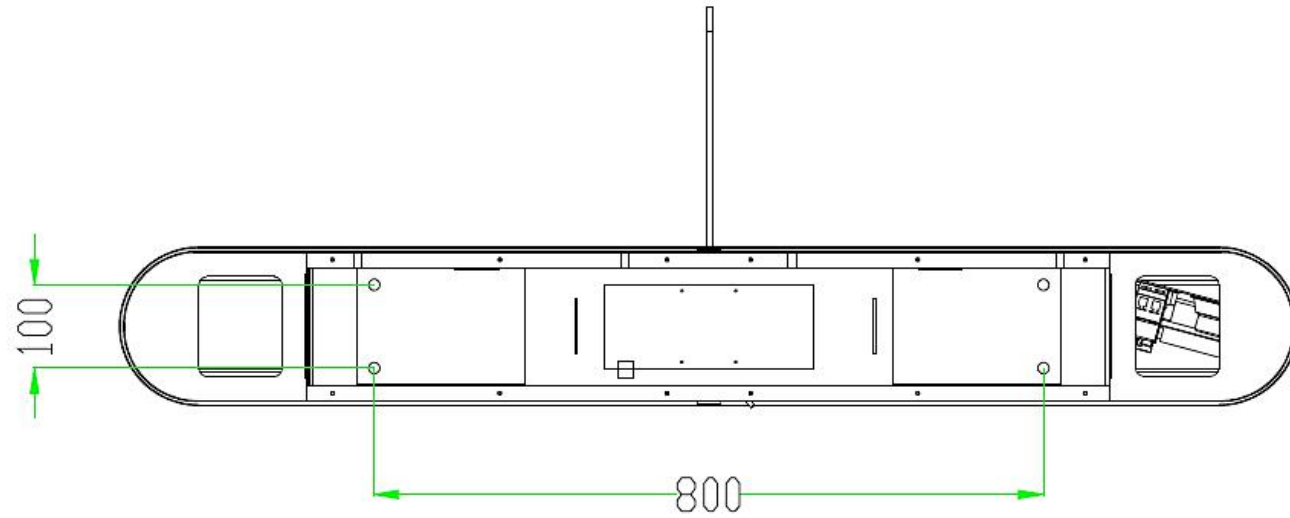
# Dimensions



# Dimensions



# Installation



### 3. PERFORMANCE

Power requirements		AC 100 ~ 120V/200 ~ 240V, 50/60Hz
Working temperature		-28°C~60°C
Working humidity		5%~80%
Working environment		Indoor
Speed of throughput	RFID	Maximum 40/ minute
	Fingerprint	Maximum 35/ minute
Lane width(mm)		650
Footprint(mm*mm)		1400*1010
Dimensions(mm)		L=1400, W=180, H=1000
Dimension with packing(mm)		L=1500, W=260, H=1100
Net weight(kg)		120
Weight with packing(kg)		150
Cabinet material		SUS304 Stainless Steel
Lid material		Tempered Glass
Barrier material		Tempered Glass
Barrier movement		Swing



## Features



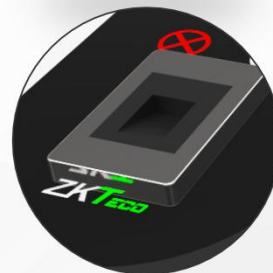
SUS304 stainless steel casework ensure long-lasting durability



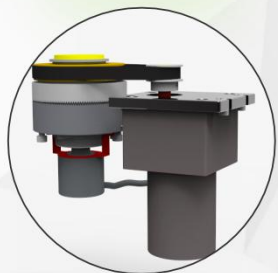
8 pairs of infrared sensor, detection more accurate



Backlight indicator



SilkID fingerprint module



Anti-collision design for protecting the motor



Power off can open gates manually ensure security

## Option function



QR Code



Face Recognition

## Advantage

1. Integrated with our access control system. It is easy to management personal by biosecurity software.
2. Saving the cost of installation.

## 4. MARKET ANALYSIS



## Case study

Office lobby in Shanxi , China







Hello

---

2018

**T**HANK YOU

Clyde.cheng@zkteco.com